

SHERWOOD



Four bedroom detached family home with integral single garage

This home features...

Beautifully designed SieMatic kitchen by Stuart Frazer with integrated NEFF appliances

Open plan kitchen/diner with bi-fold doors into garden and separate utility

Master bedroom with ensuite and three further double bedrooms

Large family bathroom with separate shower

Generous lounge with bay window

Large turfed and fenced gardens

Integral single garage and paved parking area for two additional cars

Quality fixtures & fittings throughout

Prestige Collection

 SHERWOOD

1281 ft² / 119m² Four bedroom detached luxury family home with integral single garage



GROUND FLOOR

Kitchen / Dining

6.9m x 3.7m
22' 8 x 12' 2

Lounge

4.7m x 3.2m
15' 5 x 10' 6

Garage

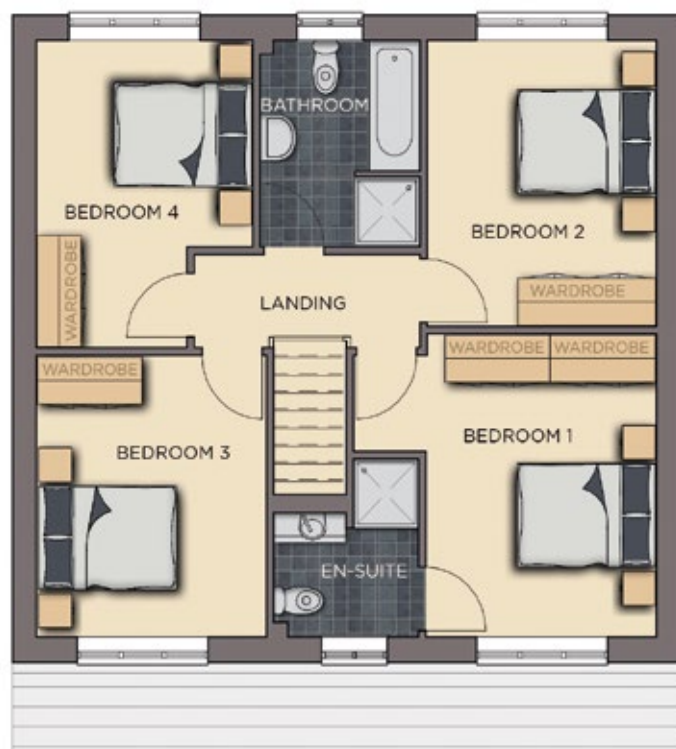
6.1m x 3.0m
20' 0 x 9' 10

Utility

2.6m x 1.6m
8' 7 x 5' 3

WC

1.9m x 0.9m
6' 3 x 3' 0



FIRST FLOOR

Master Bedroom

4.0m x 4.2m (Max)
13' 2 x 13' 10 (Max)

Bedroom 2

3.7m x 3.2m
12' 2 x 10' 6

Bedroom 4

4.0m x 3.0m (Max)
13' 2 x 9' 10 (Max)

En-suite

2.3m x 2.0m (Max)
7' 7 x 6' 7 (Max)

Bedroom 3

3.7m x 3.2m
12' 2 x 10' 6

Bathroom

2.7m x 2.2m
8' 11 x 7' 3

Benefits include...

- Beautiful SieMatic kitchen by Stuart Frazer with integrated NEFF appliances & Essentials wine cooler | 5 burner induction hob
- Dining area with bifold doors leading to fully fenced & turfed garden with patio | White Vitra sanitaryware with Hansgrohe fittings | Porcelanosa tiling
- Heated towel rails | Worcester Bosch heating system | USB points, brushed chrome sockets & downlighters | Panelled Oak Shaker doors
- White painted staircase with Oak handrails & newel posts | Neutral decor throughout | Security alarm | Smoke alarm | Fibre optic BT masterboxes
- Front landscaping and turfing | Exterior lighting | Integral single garage | Block-paved private driveway for additional two cars
- Fast car charging point | 10 year warranty... and so much more

++ See Create Homes' specification sheet for full details ++

The dimensions given are approximate only. Artist impressions are for illustrative purposes only.

CONSUMER
CODE FOR
HOME BUILDERS

www.consumercode.co.uk

create homes
CREATEHOMES.COM